

Crestline[®] Dampening System

Installation Instructions

Hamada 500, 600, 700, E-47, SU47 Series

Parent Press



A Pamarco Technologies Inc. Company

X88-25
01/2001
Rev-C
2593

GENERAL INFORMATION

ATTENTION CRESTLINE® DAMPENER OWNER!

Accel Graphic Systems provides parts and service through its authorized distributors and dealers. Therefore, all requests for parts and service should be directed to your local dealer.

The philosophy of Accel Graphic Systems is to continually improve all of its products. Written notices of changes and improvements are sent to Accel Graphic Systems' Dealers.

If the operating characteristics or the appearance of your product differs from those described in this manual, please contact your local Accel Graphic Systems Dealer for updated information and assistance.

Always update your dampener when improvements are made available, especially those related to safety.

YOUR AUTHORIZED CRESTLINE® DEALER IS:

PRINTERS PARTS

800-543-1117 201-935-9595

fax 800-392-4072 201-935-5333

www.ppsnj.com

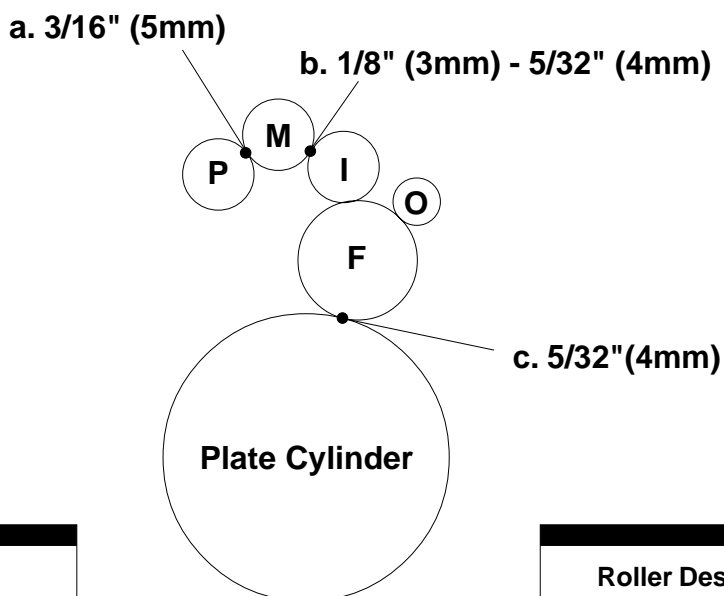
THE SERIAL NUMBER OF YOUR CRESTLINE® DAMPENER(S) IS:

SAFETY INFORMATION

FOR YOUR SAFETY, DO NOT DISENGAGE OR REMOVE ANY GUARDS FROM THE CRESTLINE® DAMPENER. THE DAMPENER CONTAINS SOME INWARD ROTATING ROLLER NIPS THAT CAN CAUSE INJURY IF LEFT UNGUARDED.

GENERAL INFORMATION

BASIC CONFIGURATION OF CRESTLINE® AND ROLLER PRESSURES



Adjustments

- a. Pan to Metering
- b. Metering to Intermediate
- c. Form to Plate

Roller Description

- P = Pan
- M = Metering
- I = Intermediate
- O = Oscillator
- F = Form

TERMINOLOGY

OPS = Operator's Side

NOPS = Non Operator's Side

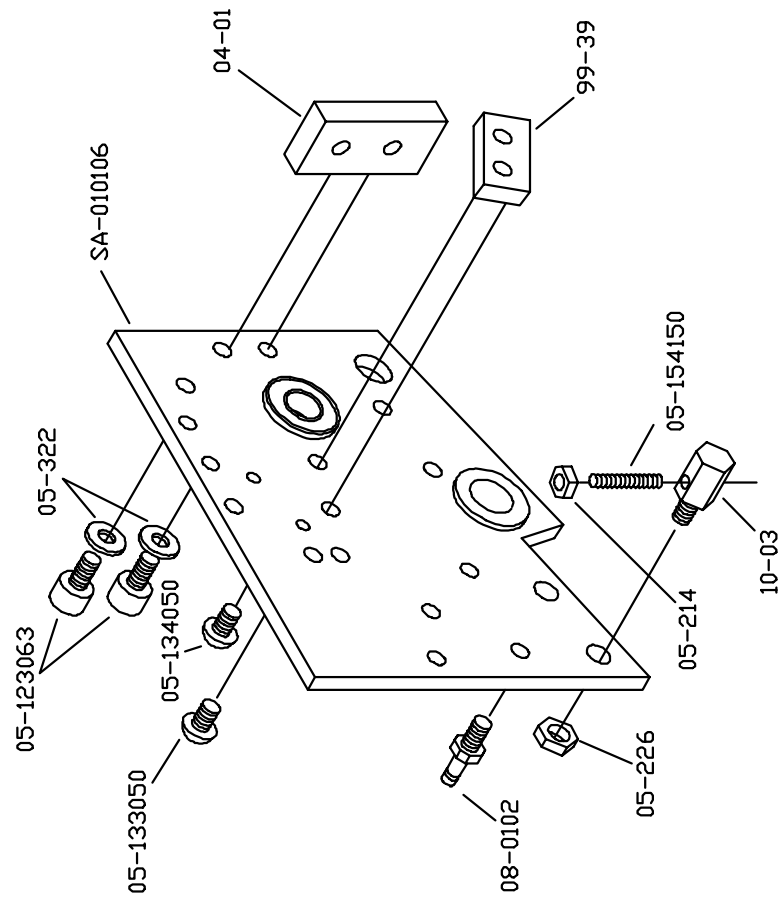
TECHNICAL ASSISTANCE

For technical assistance during the installation, please contact:

PRINTERS PARTS
800-543-1117 201-935-9595
fax 800-392-4072 201-935-5333
www.ppsnj.com

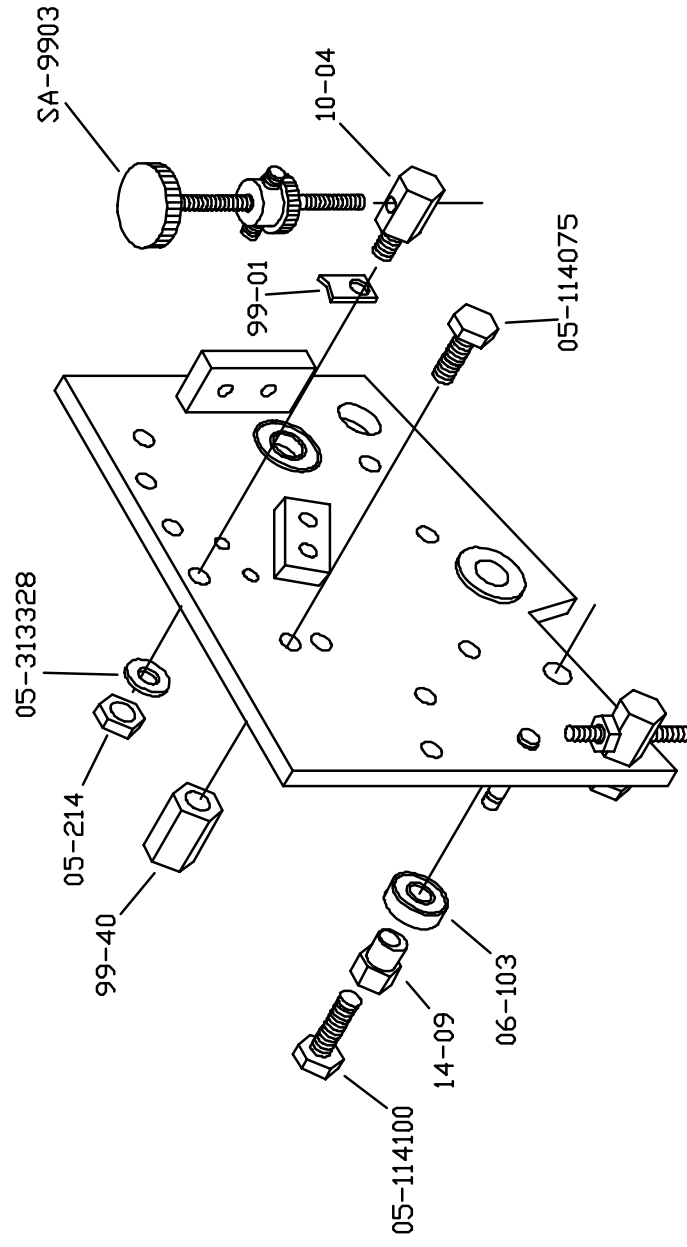
Crestline® is covered by U.S. Patents and Patents Pending

HAMADA 600 - OPS



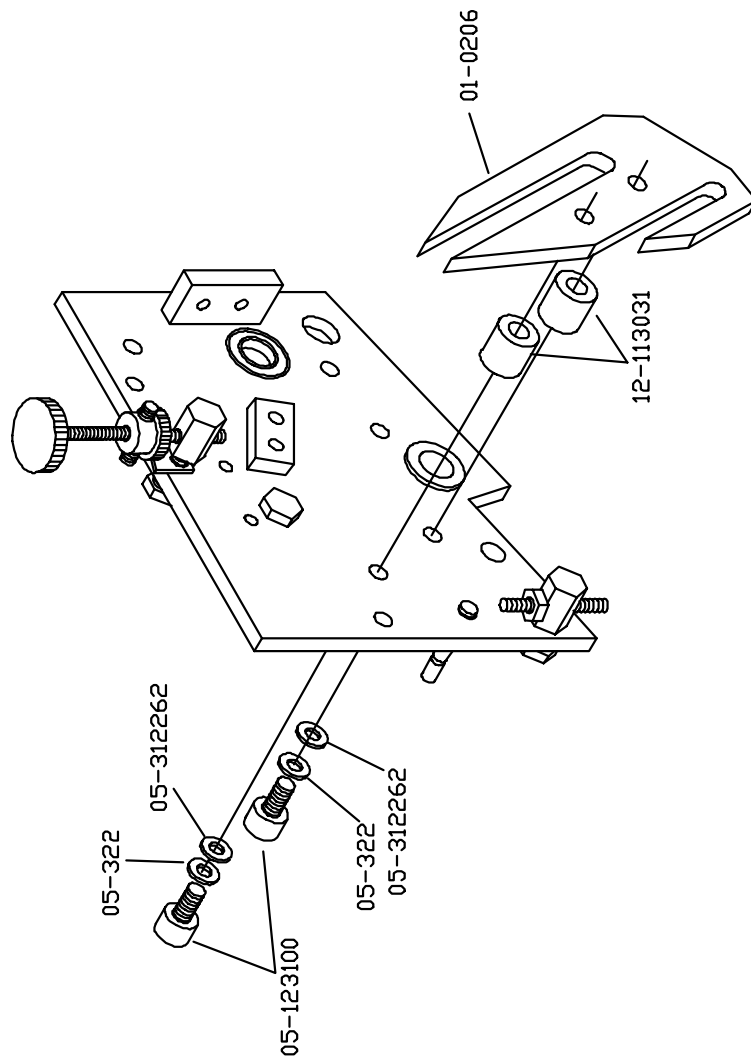
HM600C01, 8-15-97

HAMADA 600 - OPS



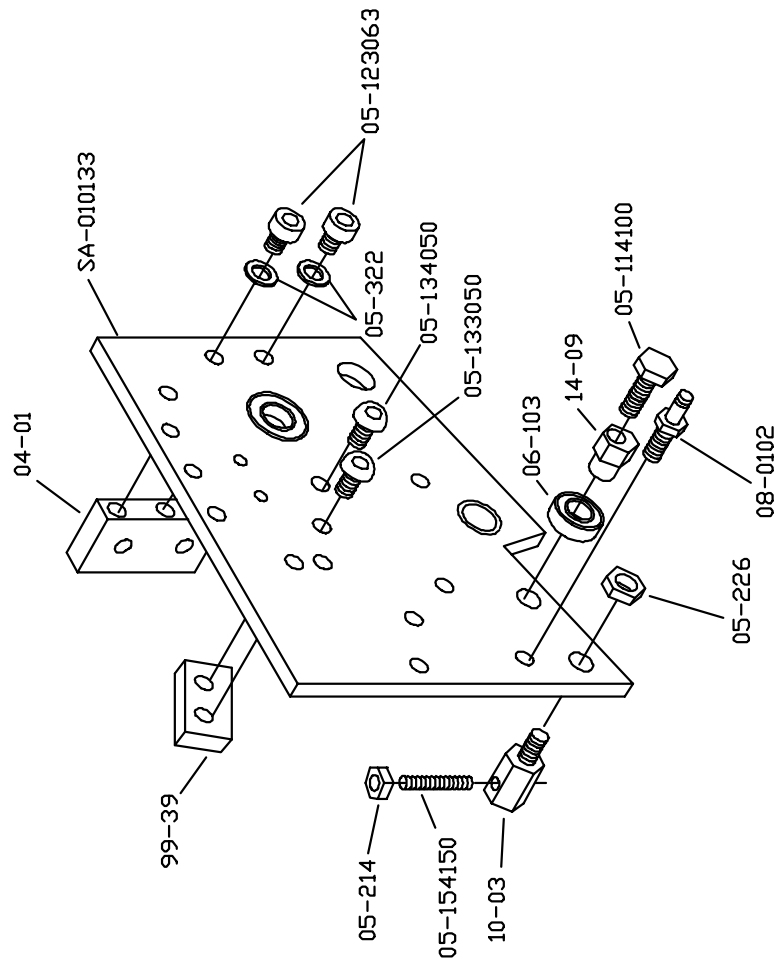
HM600C02 8-20-97

HAMADA 600 - DPS



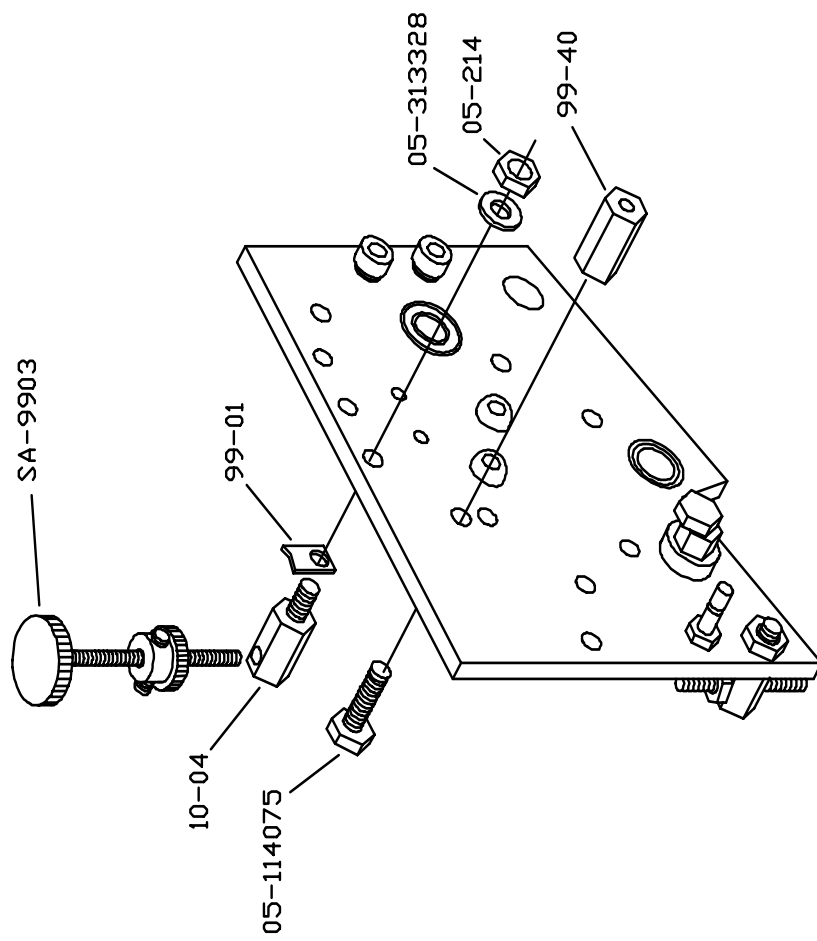
HMG00C03 8-11-97

HAMADA 600 - NOPS

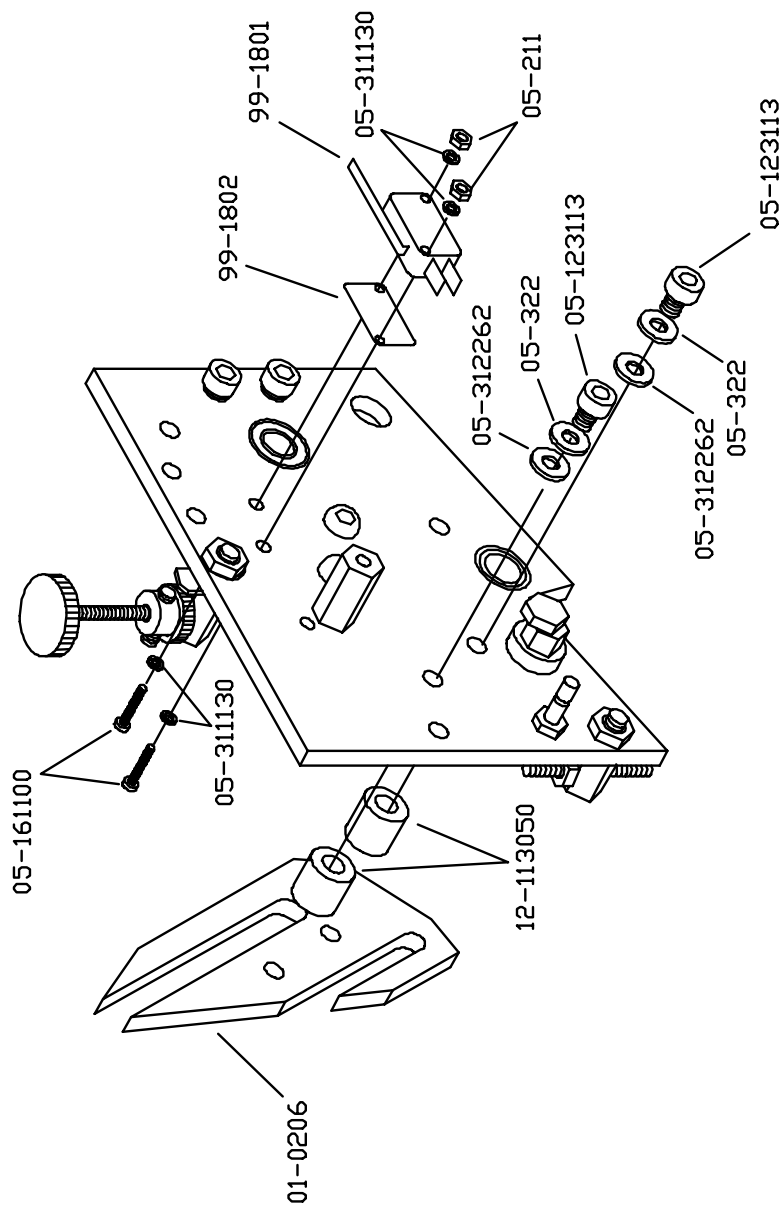


HMG600C04, 8-15-97

HAMADA 600 - NOPS

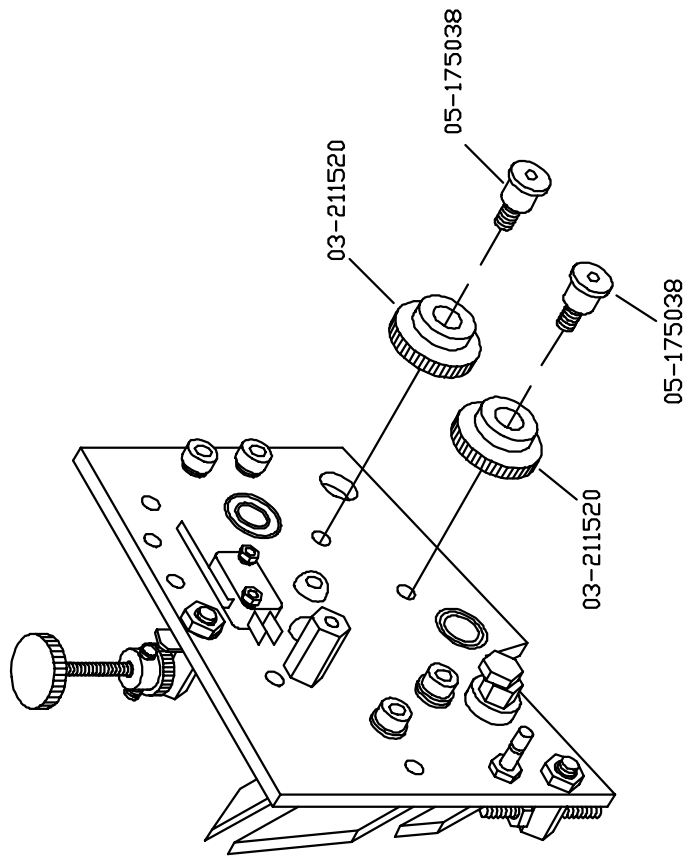


HAMADA 600 – NOPS

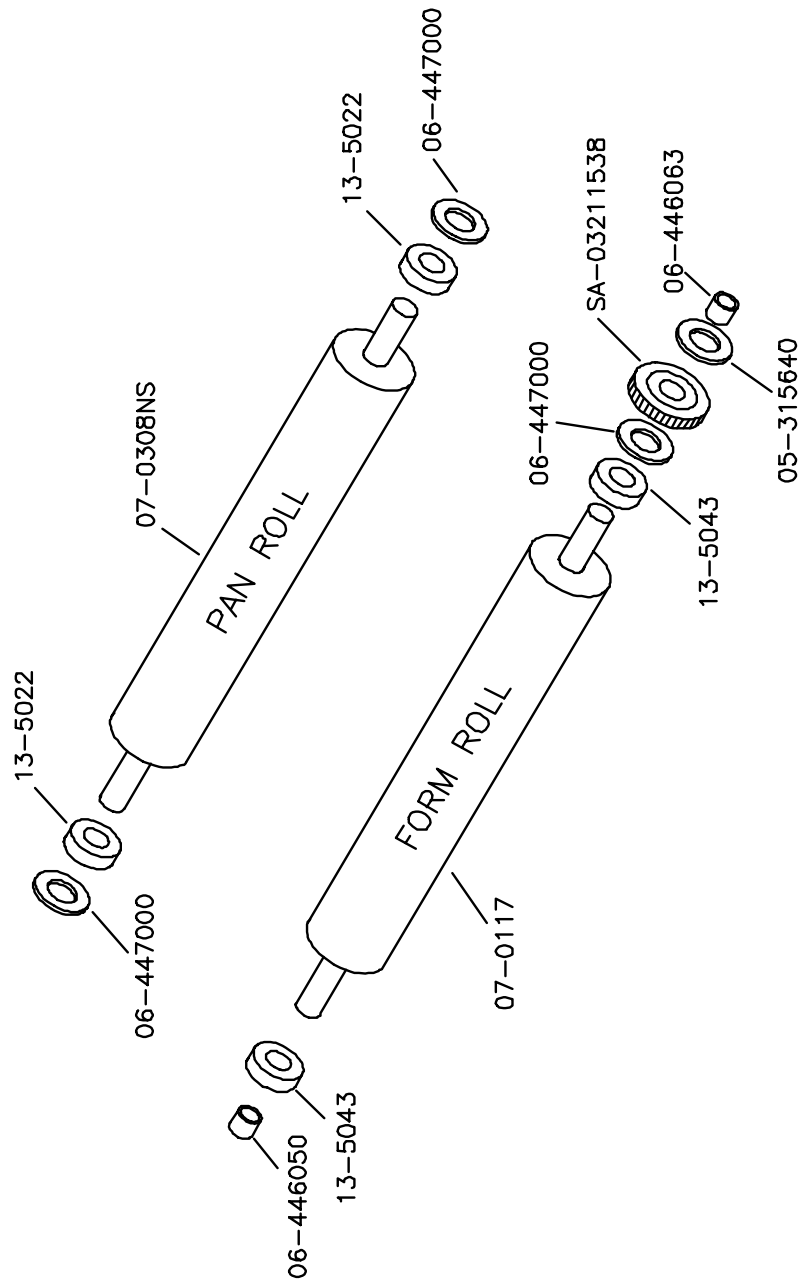


HM600C06 8-11-97

HAMADA 600 – NOPS

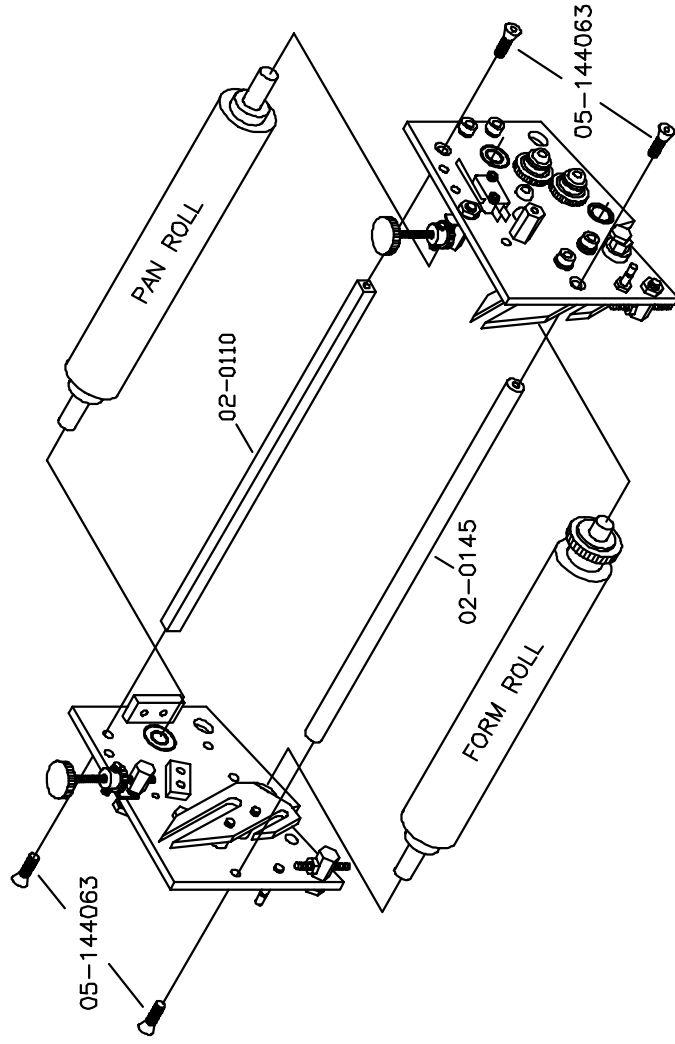


HAMADA 600

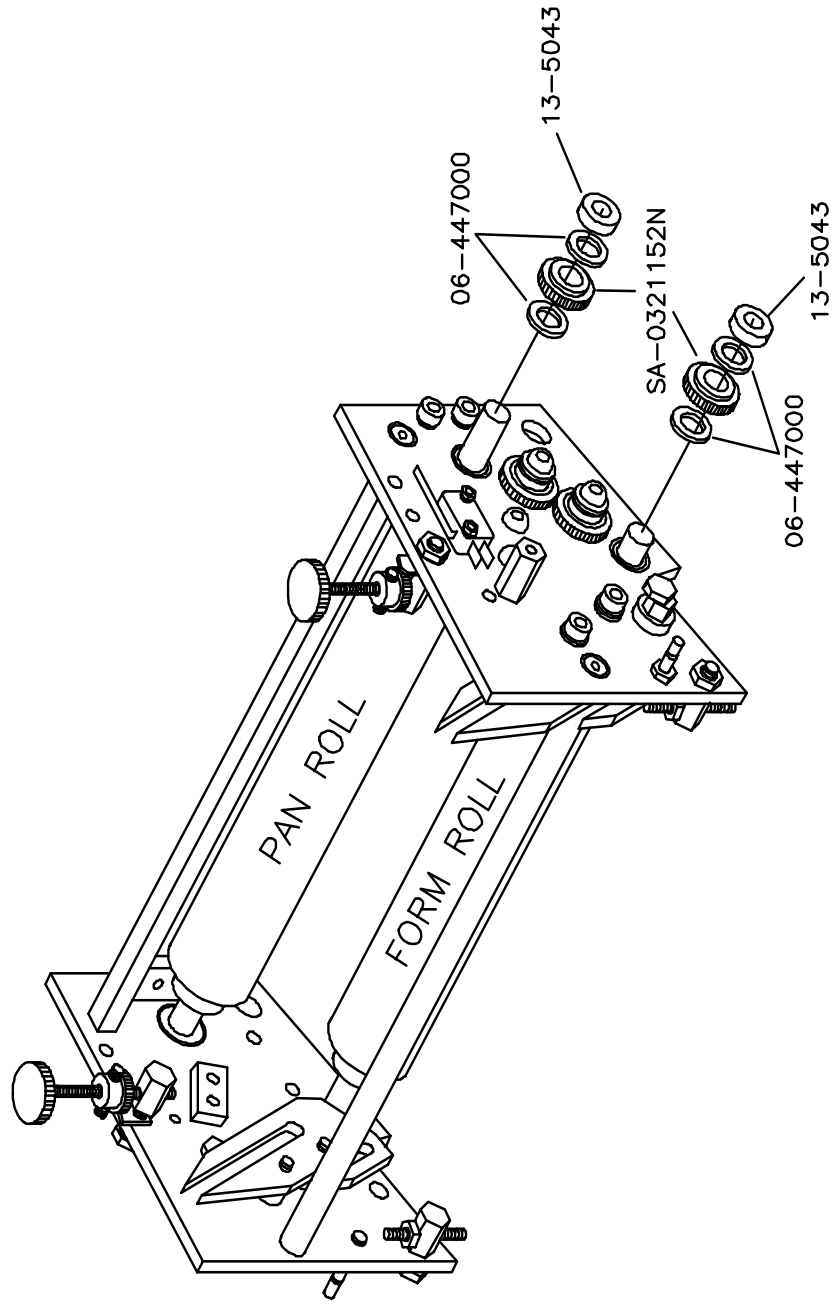


HM600C08 12-12-97

HAMADA 600

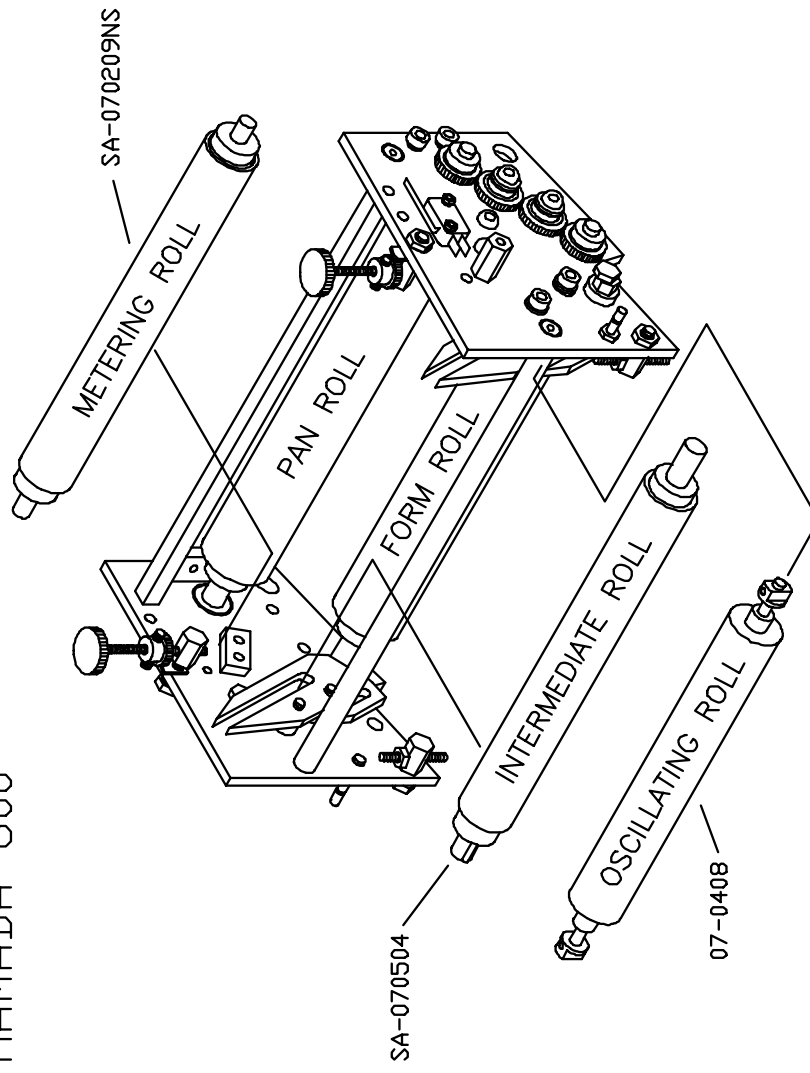


HAMADA 600

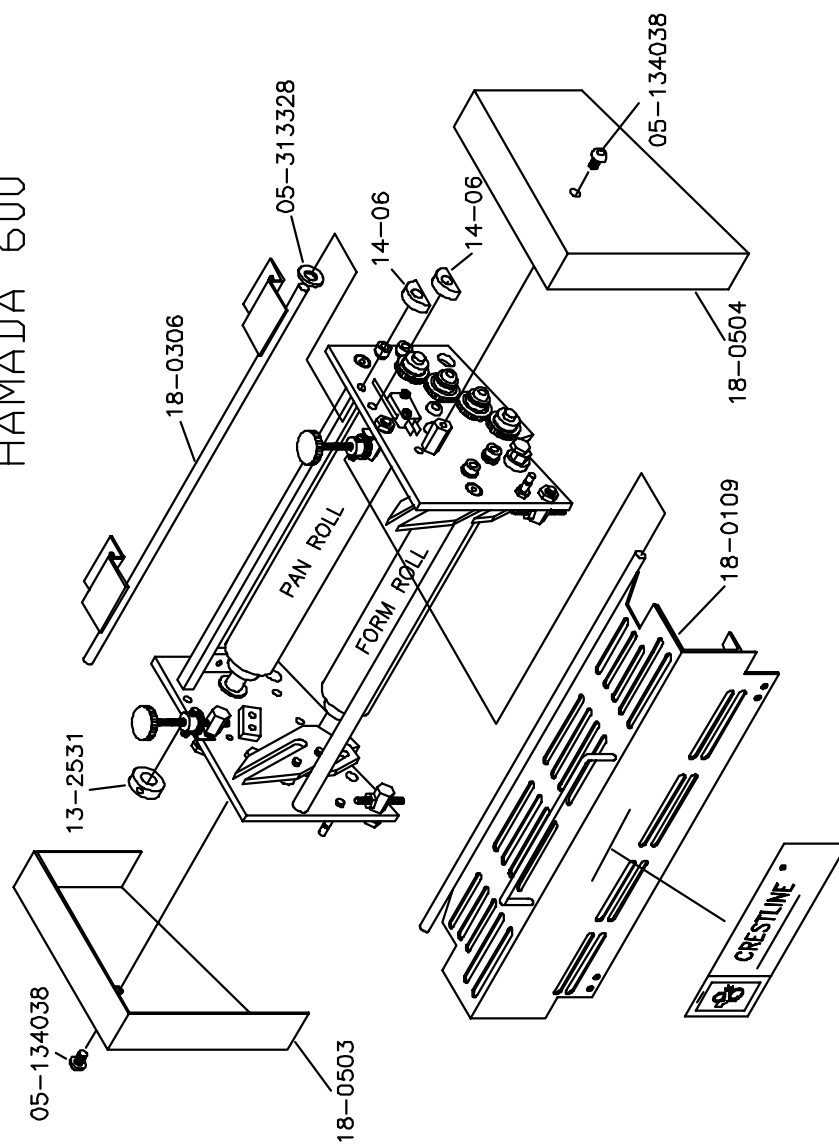


HM600C10 12-10-97

HAMADA 600

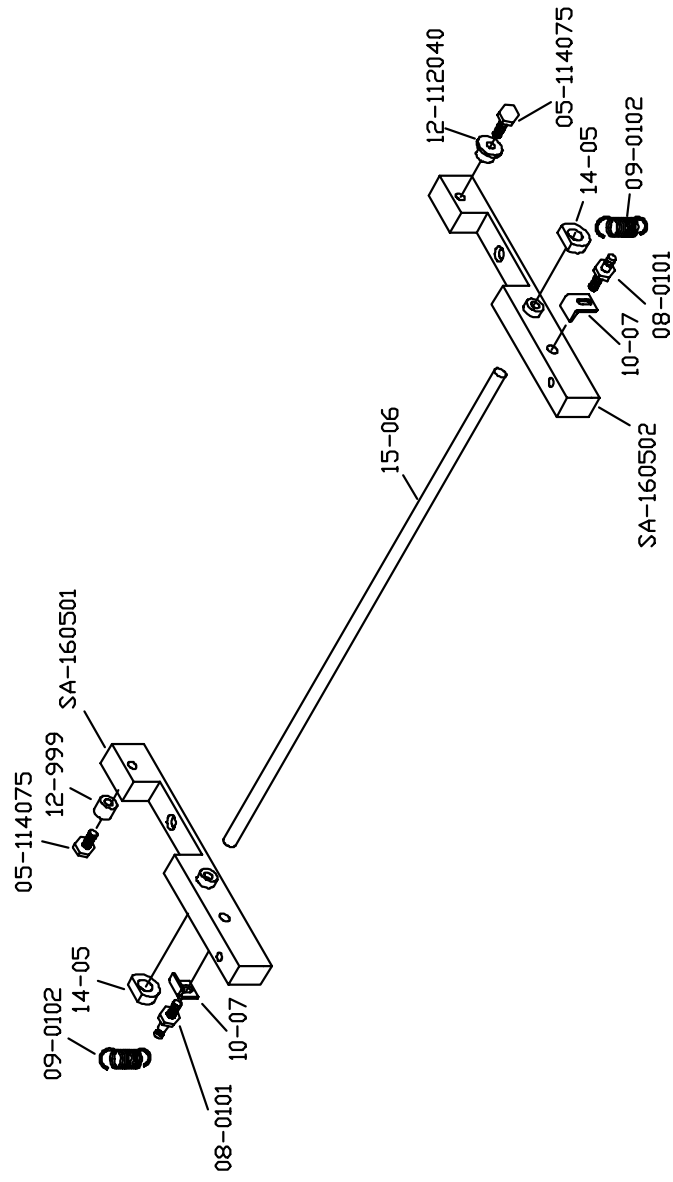


HAMADA 600

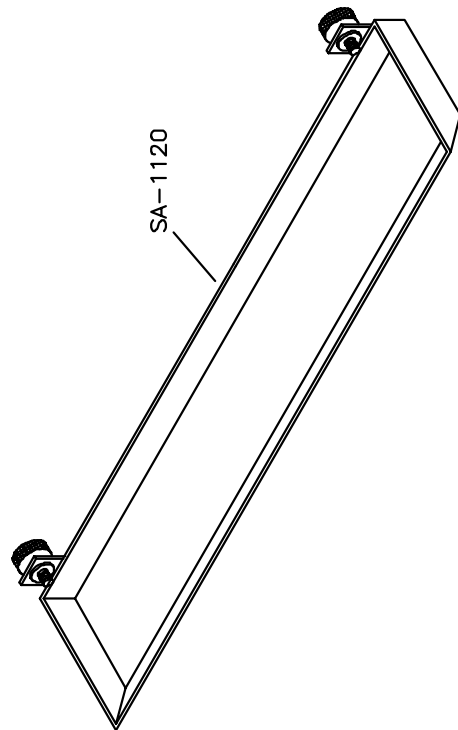


HM600C12 8-11-97

HAMADA 600



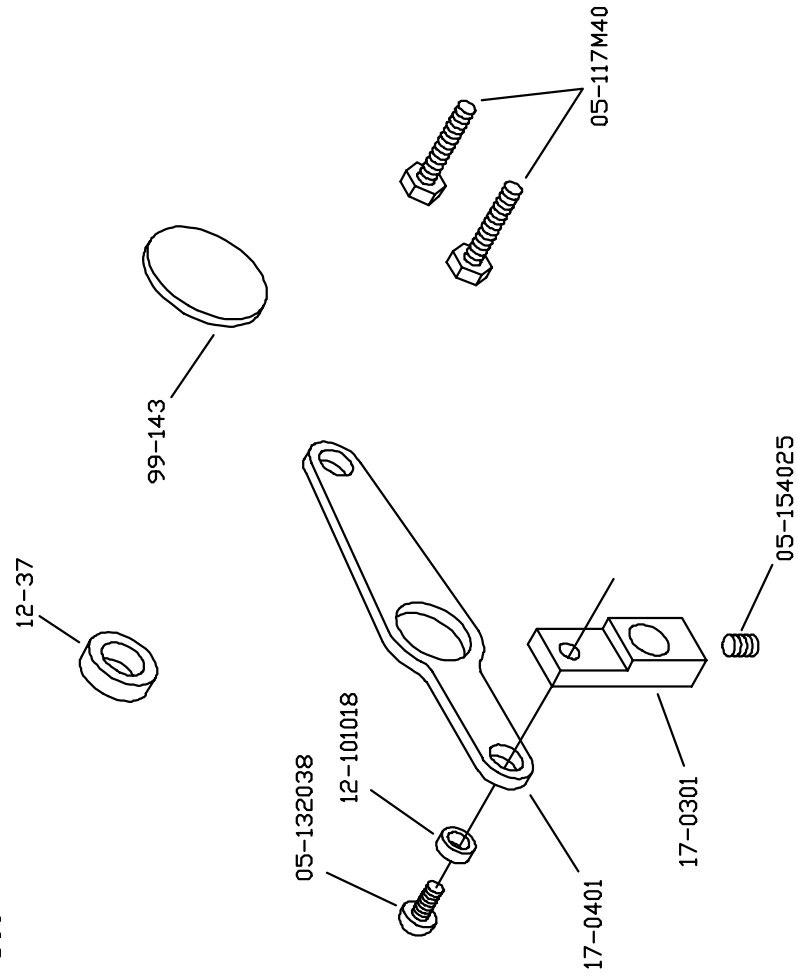
HAMADA 600



pan bolts X99-90
washers X99-150
uses Hamada OEM Bottle

HM600C14, 8-15-97

HAMADA 600



HM600C15, 8-15-97