

# RYOBI 3302 / ITEK 3985 / A.B.DICK 9985 ALTRA SERIES

## Frequently Used Part Numbers

### Rollers

X07-0135	Form Roller
XSA-070338	Pan Roller, Hard (Roller, bearings)
X07-0431	Oscillator Roller, Hard
XSA-070234	Metering Roller Assy., Soft (Roller, shaft, bearings, snap rings)
XSA-07006	Intermed. Roller Assy., Soft (Roller, tie bar, bearings, collars)

### Side Frame Assemblies

XSA-010142P	OPS Side Frame Assy. (Frame & bearings)
XSA-010142N	NOPS Side Frame Assy. (Frame & bearings)

### Gears

XSA-03211530	Pan Gear Assy. (Gear w/ clutch bearing)
XSA-03231ALTRA	Intermediate Gear Asssembly (Gear, bushing, bolt)
X03-211528	Oscillator Gear

### Sealed Ball Bearings

X06-108	Side Frame Bearing (2 per dampener)
X06-130	Sealed Ball Bearing, Pan (2 per dampener)
X06-103	Internal Metering Roller Bearing (1607DC, requires qty. 2)

### Miscellaneous

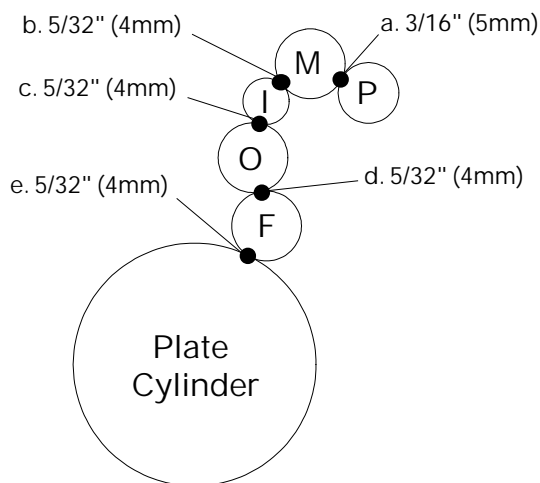
XSA-9937	Metering Knob Assy.
XSA-1110	Water Pan Assy. (w/ bottle bracket & pan bolts)
X99-29	Water Pan Hose
XSA-9905	Water Bottle (w/ cap)
X99-61	Wash Up Bottle
X88-67	Installation Manual

### PRINTERS PARTS

800-543-1117 201-935-9595

fax 800-392-4072 201-935-5333

www.ppsnj.com



#### Adjustments

- a. Metering to Pan
- b. Metering to Intermediate
- c. Intermediate to Oscillator
- d. Oscillator to Form
- e. Form to Plate

#### Roller Description

- P = Pan, Hard
- M = Metering, Soft
- I = Intermediate, Soft
- O = Oscillator, Hard
- F = Form, Soft