

Multi Conveyor

parts catalog

Multigraphics TA4
Service Publications

201 7842 --(D O(

explanatory

**ALWAYS USE PART NUMBER AND DESCRIPTION WHEN ORDERING PARTS.
DO NOT ORDER BY KEY NUMBER.**

GENERAL

This illustrated Parts Catalog has been prepared to assist in identification of parts which may require replacement as a result of wear, damage or loss.

PARTS GROUPS

A group shows a main physical sub-assembly. Each group comprises an itemized illustration and a list of the parts shown in the illustration.

KEY

Every part or assembly listed has a key number which corresponds to the illustration. The key number for an assembly will appear in the illustration in a circle near to the appropriate parts.

A suffix (A to Z, with the exception of land 0) may be added to the key number, where necessary, for the following reasons:

1. The key indicated parts which are identical as far as installation and function are concerned, but which differ in part number, e.g. motors for different voltages (also relays, solenoids, etc.)
2. For non-interchangeable parts, the new-style part is identified by a new line with the old key number (with suffix), followed by the new part number and description and quantity.

PART NUMBER

The full part number must always be used when ordering parts.

DESCRIPTION

This column includes the name of the parts and, possibly one or more of the following;

- 1) up to machine no. **amm**
This part is only used in machines up to the stated serial number,
- 2) from machine no. **aux**
This part can only be used in machines with the quoted serial number or a higher one.

- 3) Include* **xx** through **xx**

When this part number is ordered all parts identified with key numbers **xx** through **xx** will be supplied as an assembly.

Note: all parts which require permanent riveting, welding or assembly in jigs or fixtures will be furnished assembly_

In some parts catalogs, the first letter of the description is indented. This indicates the assembly level of the part.

QTY

The column quantity (city) shows the quantity of each part as included in the next larger assembly.

PART CHANGES

When a new part is added or a part number's changed a dot is added alongside the key number.

When parts are deleted from a list, the appropriate key numbers are given at the end of the list, preceded by e dot

- deleted: keys 3,13,7,

SPECIAL NOTES

Multigraphics reserves the right to modify specifications or design without incurring the obligation to change machines already sold.

01932
AM International Inc.

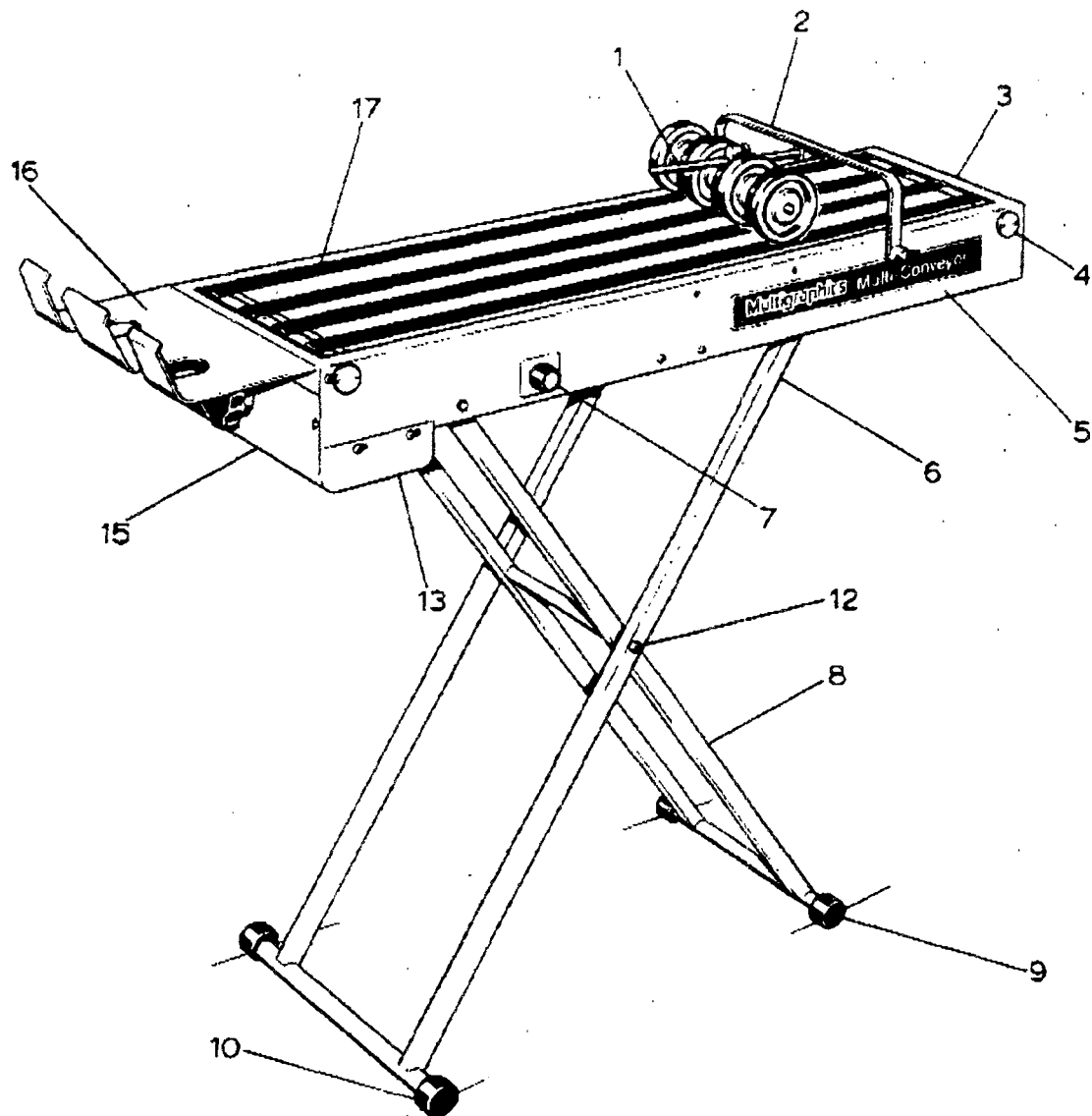
MULTI Conveyor is a trademark of AM International, Inc.

Published for use by trained Technical Service Representatives of Multigraphics and official distribution only. Any other user assumes full responsibility and liability for all injuries and damages (including injury and damage to its personnel, equipment and business relationships) resulting from or occasioned by usage (whether for intended purpose or otherwise) of this technical service information,

Published by Service Publications, February, 103

TABLE OF CONTENTS

-Group	Page,
1 External Components	2
2 Stacker Wheel Bail Assembly	3
3 Stacker Wheel Pivot Assembly	6
4 Motor Assembly	7
5 Height Adjustment Components	10
6 Electrical Components	11

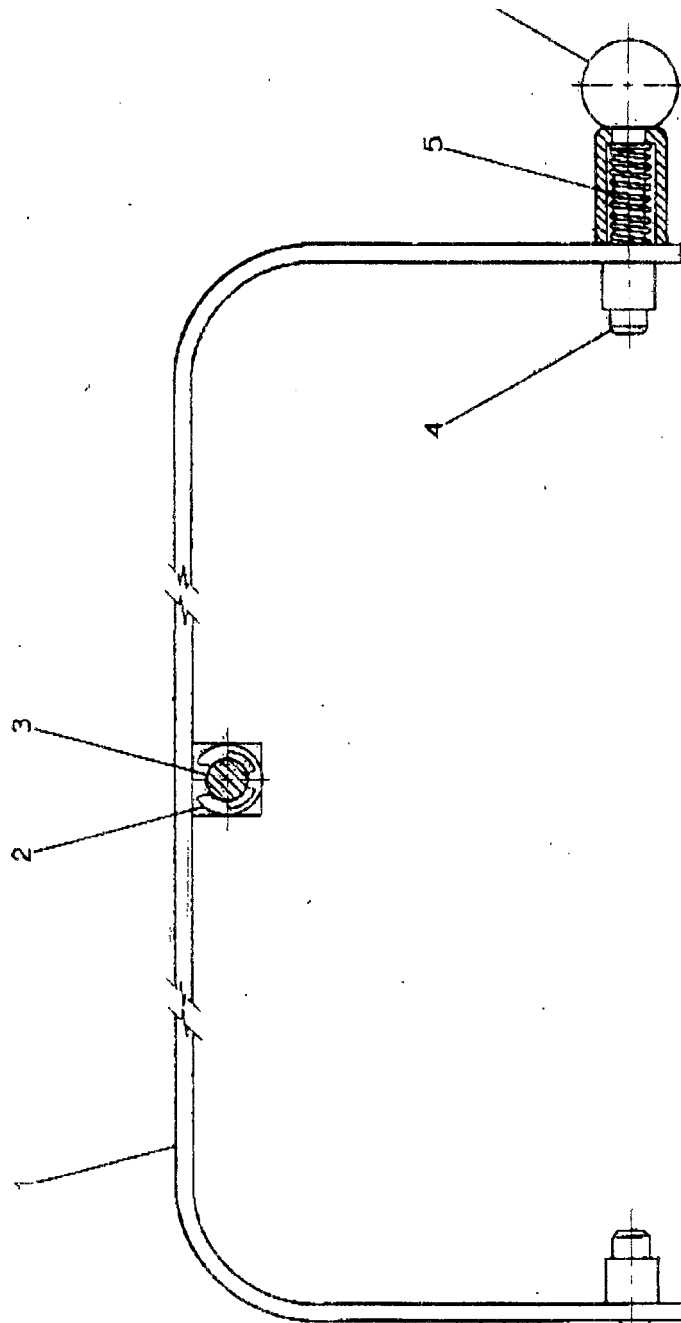


142119A

GROUP 1 — External Components

KEY	PART NUMBER	DESCRIPTION	QTY	NT
	13-7-188C5C	MULTI-CONVEYOR 60 CYCLE		
1	50-500-56	STACKER WHEEL PIVOT ASSY.	1	
2	50-500-47	STACKER WHEEL BAIL ASSY.	1	
3	50-500-04	BLEY END DELIVERY	1	
4	50-500-42	BEARING AND HOUSING ASSY.	4	
	50-500-67	BEARING HOUSING	4..	
	50-500-66	SCREW, FT. HD. 2-56X1/4	a	
5	50-500-02	BOCY	1	
	50-500-75	SCREW, PH, HD. 10-32X ¹ / ₄	10	
6	50-500-21	OUTSIDE LEG ASSY.	1.	
7	50-500-46	SPEED CONTROL POT. ASSY.	1	
	50-500-69	SOLENOID, SPEED CONTROL	1	
	50-500-70	PLATE, SPEED CONTROL	1	
8	50-500-20	INSIDE LEG ASSY.	1	
	50-500-71	CLEVIS PIN	2	
	50-500-72	RETAINING CLIP	2	
9	50-500-35	CONCENTRIC TUBE END	3	
10	50-500-36	ECCENTRIC TUBE END	1	
	50-500-93	SCREW SOC. KO. 10-32X3/16	1	
12	50-500-37	LEG PIVOT ROD	1	
	50-500-78	WASHERS, METAL	2	
	50-500-7s	WASHERS, PLASTIC	2	
	50-500-80	SCREW, PH. 10-32x3/6	2	
13	50-500-It	MOTOR GUARD ASSY.	1	
	50-500-75	SCREWS, PH. HD. 10-32X1/4	2	
	50-500-73	SCREW, PH. HO. 10-32XI/2	2	
	50-500-74	WASHERS	2	
15	50-500-03	BODY END RECEIVING	1	
	50-500-75	SCREWS, PH. HD. 10-32X1/4	4	
16	50-500-19	CONVEYOR RECEIVING TRAY	1	
	50-500-75	SCREW, PH. HO. 10-32X1/4	3	
17	50-500-w31	CONVEYOR JAPES 4AP*6.		

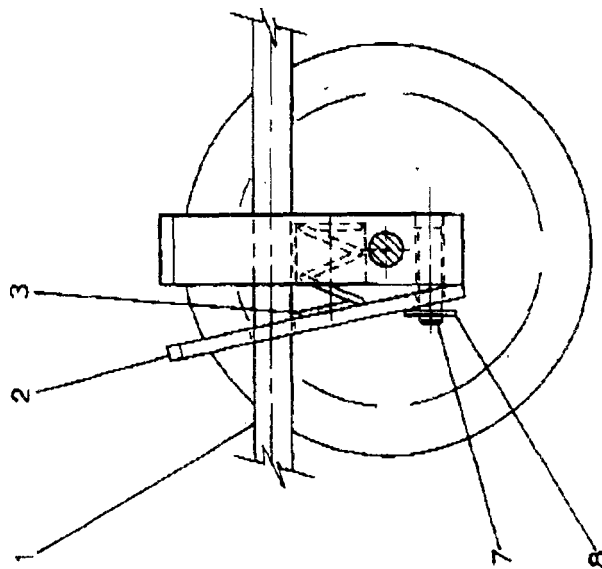
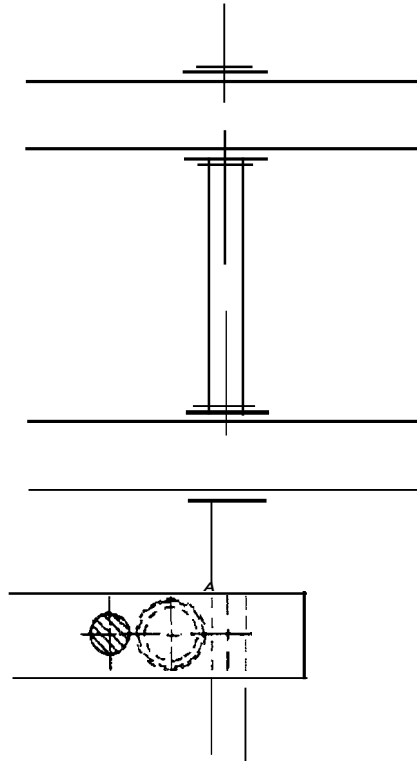
GROUP 2 — Stacker Wheel Bail Assembly



GROUP 2— Stacker Wheel Ball Assembly

KEY	PART	NUME	DESCRIPTION	CITY	NT
1	50-500-47		STACKER WHEEL BAIL. ASSY.	1	
2	50-500-65		TRUARC, 5133-31	1	
3	50-500-62		REACH ROD	1	
4	50-500-52		SAIL LOCK PIN	1	
5	50-500-54		STACKING WHEEL SPRING		
6	50-5C0-81		KNC4, STACKER WHEEL	1.	

GROUP 3— Stacker Wheel Pivot Assembly



Multigraphics

Technical Service

parts bulletin

To:
Technical and Administrative
management
Technical Representatives
Home **Office** Management

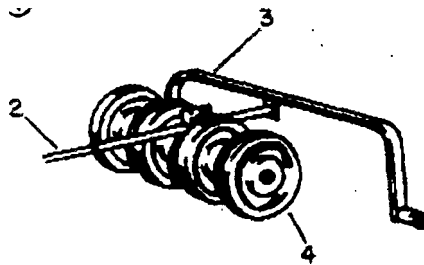
Subject Part Number Changes
Multi* Conveyor
HP-4311-DU

Date **October 22, 1984**
P8-29-84W147

IMPORTANT PARTS CHANGES — RECORD IN YOUR PARTS CATALOG IMMEDIATELY

T1P-1250/1330

A complete wheel assembly is now available for the multi Conveyor. It consists of the following-



1	50-500-200	wheel Assy., Comp.	1
2	50-500-62	Reach Rod (Gp. 3)	1
3	50-500-47	Stacker Wheel Bail Assy., (Gp. 2)	1
4	50-500-55	Stacker Wheel Assy. (Gp 3)	1

Group 4, Page 8

Add Key 5A 50-500-107 Nut Tube Assy., S/N 1330 & up 1

This new style nut tube assembly is in use on machines **S/N** 1330 and up and can be identified by the larger nut welded on the end.

4 S7 *Phillips*

Barry C. Phillips
Director
Service operations

BCP/R7H/JAA:ads

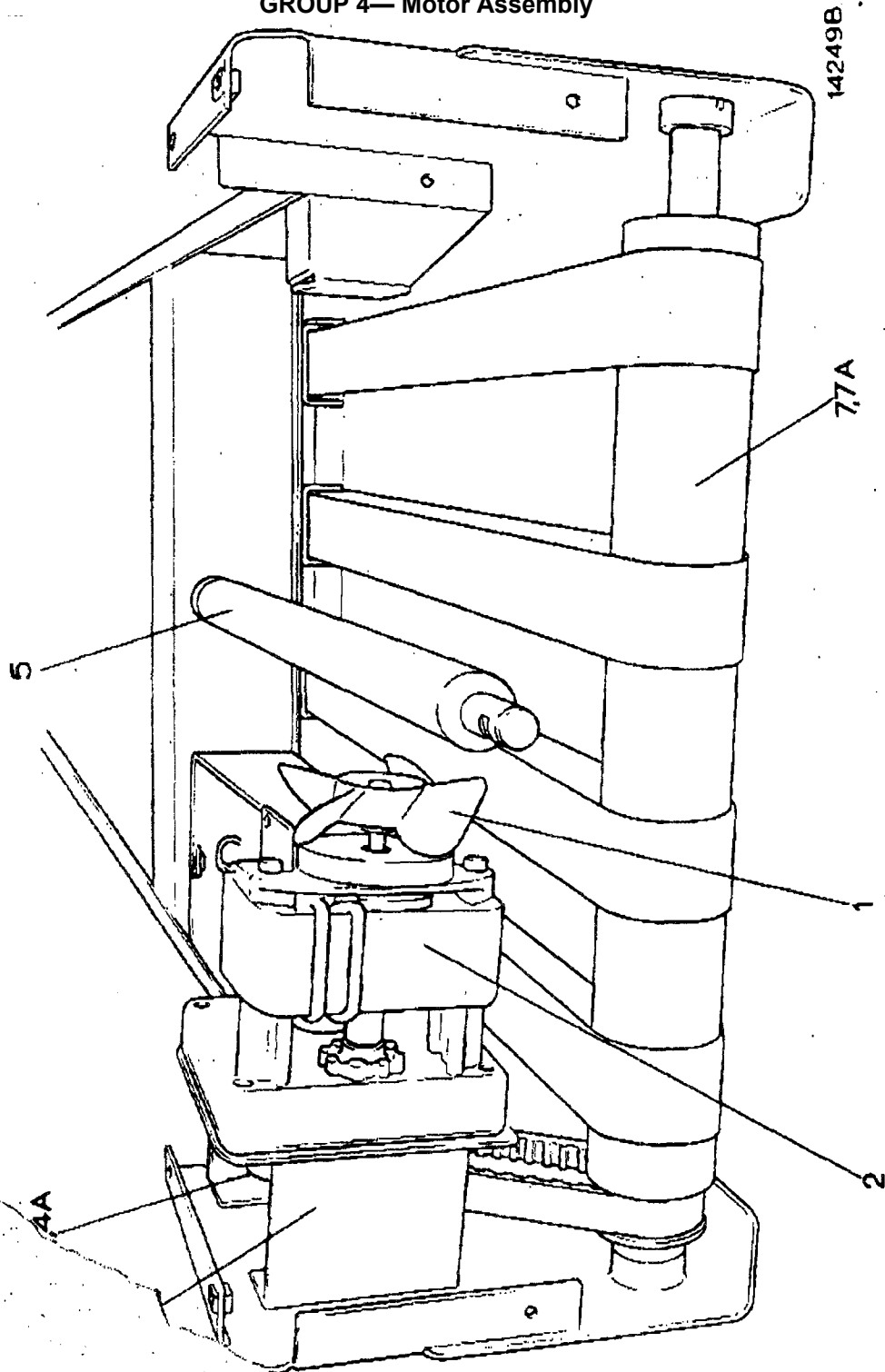
**PB-29-84WW
DUPLICATOR**

CONFIDENTIAL - For use by Multigraphics trainees, employees' and official distributors only, Not to be disseminated or reproduced without written permission of Multigraphics,

GROUP 3— Stacker Wheel Pivot Assembly

KEY	PART	NUMER	DESCRIPTION	QTY	NT
		50-500-56	STACKER WHEEL PIVOT ASSY.		
		50-500-62	REACH Rod		
2		50-500-55	CLAMP LEVER	1	
3		50-500-60	CLAMP SPRING	1	
4		50-500-55	STACKER WHEEL ASSY.	1	
5		50-500-82	WHEEL	4	
6		50-123-81	TRUARC 5L3-Z5	8	
7		50-123-80	TRUARC, 5133-1e	1	
8		50-500-61	CLAMP PIN	1	

GROUP 4— Motor Assembly



February, 1983

GROUP 4— Motor Assembly

KEY	PART Nu M ER	DESCRIPTION	QTY NT
	50-500-44	MOTOR ASSY.	
1	50-500-84	FAN	1
2	50-500-8IL	MOTOR OOS. 1:e, sm/	1
3	50-500-1e	MOUNTING BRACKET	1
	50-500-73 .	SC PEWS, PH. HO. 10-32X1/2	2
	U-300-74	WASHERS	2
444	50-500-85 -	PULLEY TIA ⁷¹⁷ /nAm'crer141--	1
4A	5.9 gegt 86123-13ib _{ta}	BELT Tr ⁴⁷ t:	1
	50-500-2S	NUT TUBE ASSY,	1
7	50-500-40	DRIVEN CON V. ROLLER 'ASSY.	1
7A	50-500-41	IDLER ONV. ROLLER ASSY.	1
	II-HS-05	Etusmi 475 rce or7Z•es-rotte 144 q	
	-(--5 f,ib - 06-161	es) EA-1i &I, :+	
	ifq 50-500-85-04XL	CIA 9C 1 O	
	0, /S, A, ? f,,,Ex	a ¹¹ eJ 1	

04.e, 4.1 2... - / x /e47;(4 •, 2,,c7;
 NEW MOTOR is 20fle2, in
 REPLACE MOTOR 544/
 BLOWING SPEED C. 0/1...72, Je° 1/43, *te,...r
 (SAME NUMBER)
 NEW MOTOR ~~BEFORE~~ USE
 FAN BLADE
 NEW MOTOR COMES WITH
 BOARD
 IR
 LONGER
 7⁴¹
 r 7⁴¹
 roo S-Cia
 .04 Or
 a;iteleo
 r 0 24,41 Z< ire 44"/
 February, 1983

GROUP 4— Motor Assembly

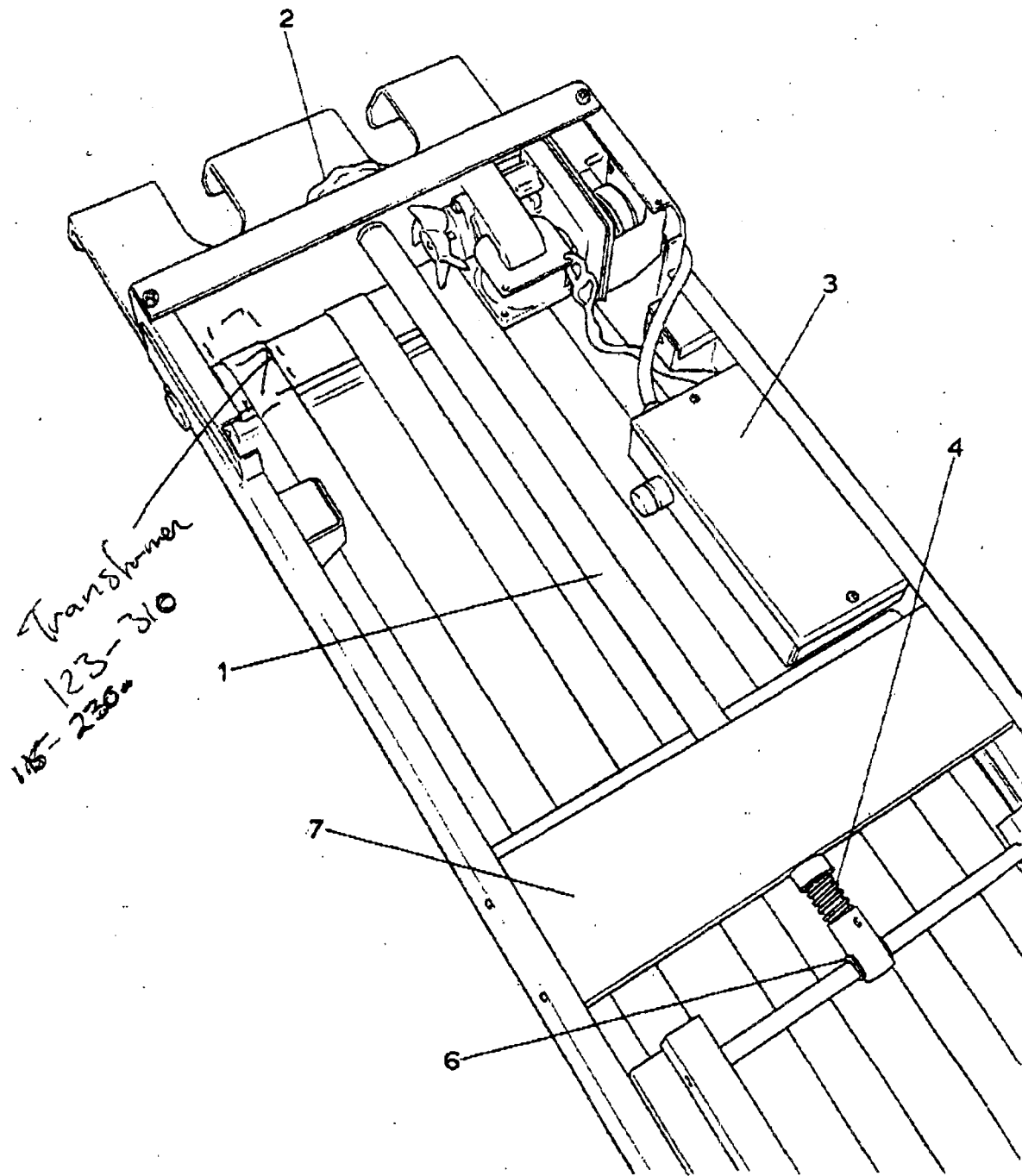
KEY	PART	IsOMEER	DESCRIPTION	QTY	NT
	50-5C0-44		MOTOR ASSY.		
1	50-500-84		FAN	1	
2	50-500-83		MOTOR	1	
3	50-500-18		MOUNTING BRACKET	1	
	50-5C0-73		SCREWS, Pm. iiD. 10-32X112	2	
	50-500-74		WASHERS	2	
4	50-500-65		PULLEY	1	
4A	se--5.ett—et / ts-/ 7y		BELT <i>few.v<-2</i> r²C1	1	
5	50-500-25		NUT TU8E ASSY.	1	
7	50-500-40		DRIVEN CONY. ROLLER ASSY.	1	
7A	50-500-41		IDLER CONV. ROLLER ASSY.	1	

SA 50 - 500 - 107 A, / (.7¹ 7_,44"

6'''4''' / d ii>v

J

GROUP 5 — Height Adjustment Components



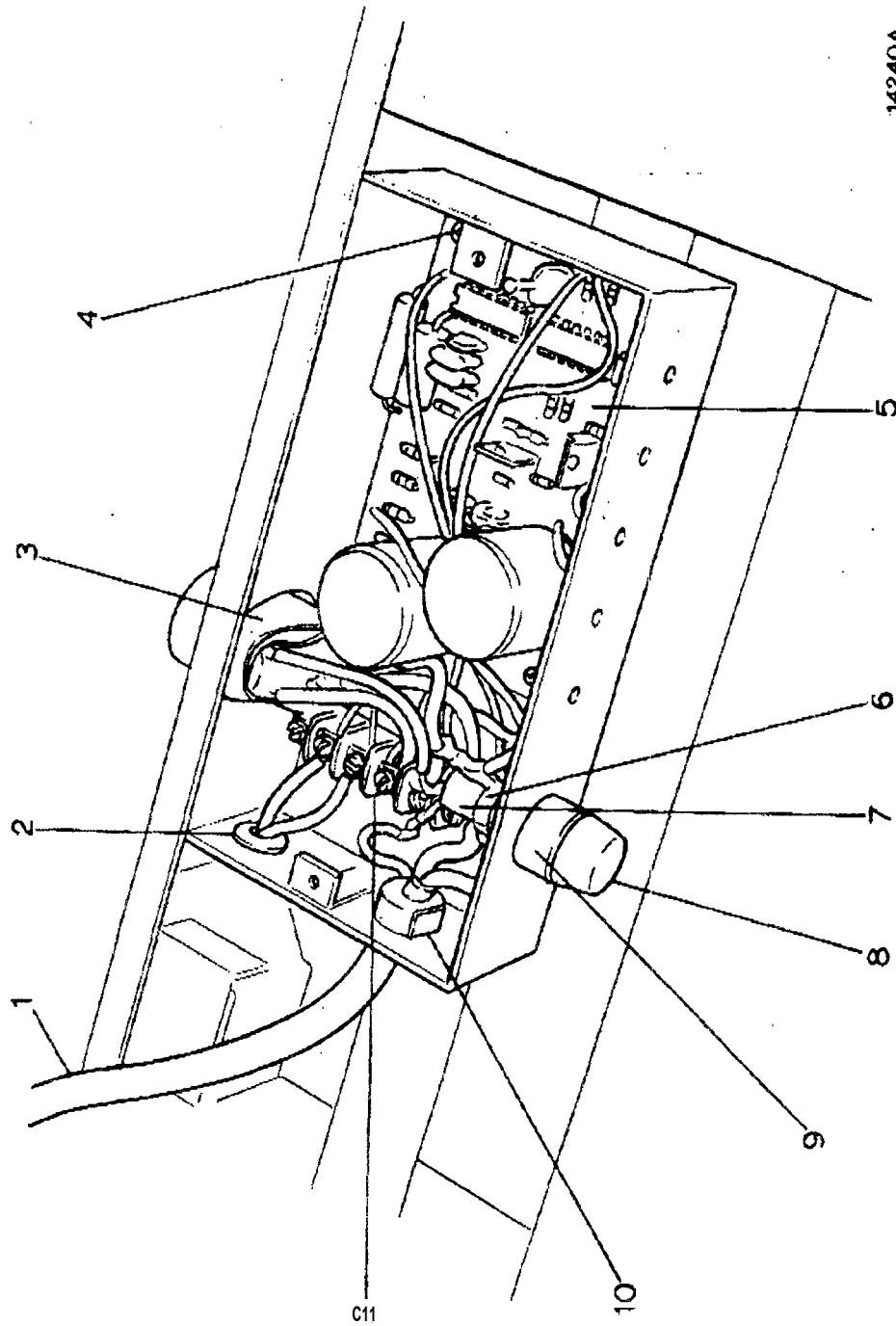
142368

February, 1983

GROUP 5— Height Adjustment Components

KEY	PART NUMEER	DESCRIPTION	QTY NT
1	50-500-29	NUT TUBE ASSY.	/
2	50-500-76	KNCB, HEIGHT ADJUSTMENT	1
	50-500-77	SPACER, PLASTIC	1
3	50-500-13	ELECTRIC CABINET COVER	3.
	50-500-17	SCREW, PH. HD., 8-32X1/4	2
4	50-590-21	THREAD, HEIGHT ADJ.	1
6	50-123-06	TRUARC, 5133-37	2
7	50-500-11	CENTER SUPPORT	1
999	50-500-34	NUT TUBE BUSHING	
	50-500-38	SLIDE ROLLER	2

GROUP 6— Electrical Components



142404

GROUP 6— Electrical Components

KEY	PART NUMBER	DESCRIPTION	QUANTITY
1	50-500-94	LINE CORD	1
2	50-500-99	GRANULE, SMALL	1
3	50-500-48	POTENTIOMETER ASSY.	
4	50-503-92	SCREW, PH. HD. 6-32X1/2	4
5	50-500-45	PC BOARD	1
7	50-500-57	FUSE	1
8	50-500-96	FUSE HOLDER ASSY.	
10	50-500-98	GRANULE LARGE	1
12	50-500-90	TERMINAL BLOCK	1
	50-500-73	SCREW PH. HD. 10-32X1/2	2

NUMERICAL INDEX

PART Nur43ER	CRAG KEY	PART NUMBER	DRAWS KEY
13-7-188090	1 A	50-500-62	3 1
50-7.23-06	5 6	50-500-65	2 2
50-123-80	2 7	50-500-67	1 4
50-123-81	3 6	50-500-68	1 4
50-500-02	1 5	50-500-69	1 7
50-500-03	1 15	ECI-5tC1-70	1 7
50-500-04	1 3	50-500-71	1 8
50-500-11	5 7	50-500-72	1 8
50-500-13	5 3	50-500-73	13
50-500-16	1 13	50-300-73	1 13
50-500-17	5 3	50-500-73	4 3
50-500-18	4 3	50-500-73	6 12
50-500-19	1 16	50-500-74	13
50-500-20	1 3	50-500-74	1 13
50-500-21	1 6	50-500-74	4 3
50-500-28	5 4	50-500-75	1 5
50-500-29	4 5	50-500-75	1 13
50-500-29	5 1	50-500-75	1 15
50-500-34	5 999	50-500-75	1 16
50-500-35	1 9	50-500-76	5 2
50-500-36	1 10	50-500-77	5 2
50-500-37	1 12	50-500-78	1 12
50-500-38	5 999	50-500-79	1 12
50-500-39	1 17	5M-500-80	1c 12
50-500-40	4 7	50-500-81	2 6
50-500-41	4 7	50-500-82	3 5
50-500-42	1 4	50-500-83	4 2
50-500-44	4	50-500-84	4 1
50-500-45	E 5	50-500-85	4 4
50-500-46	1 7	50-500-8k	4 4
50-500-46	6 3	50-500-90	6 12
50-500-47	1 2	50-500-91	6 1
50-500-47	2 1	50-500-92	6 4
50-500-52	2 4	50-500-93	1 10
50-500-54	2 5	50-500-96	6 8
50-500-54	5 4	5a-w-97	6
50-500-56	1 1	50-500-98	6 1g
50-500-56	3	50-500-99	6 2
50-500-59	3 2		
50-500-60	3 3		
50-500-61	3 8		
50-100-62	2 7		

